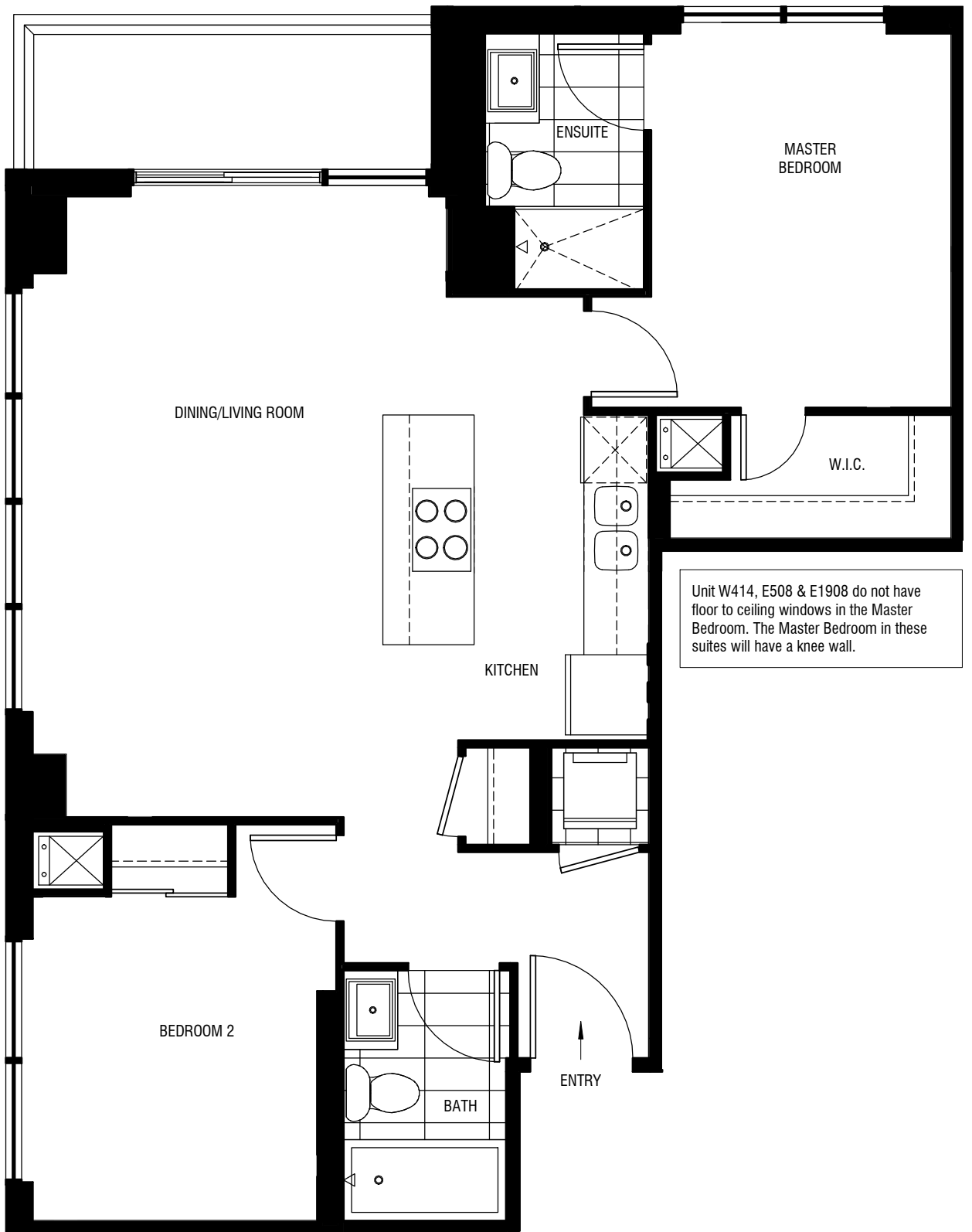




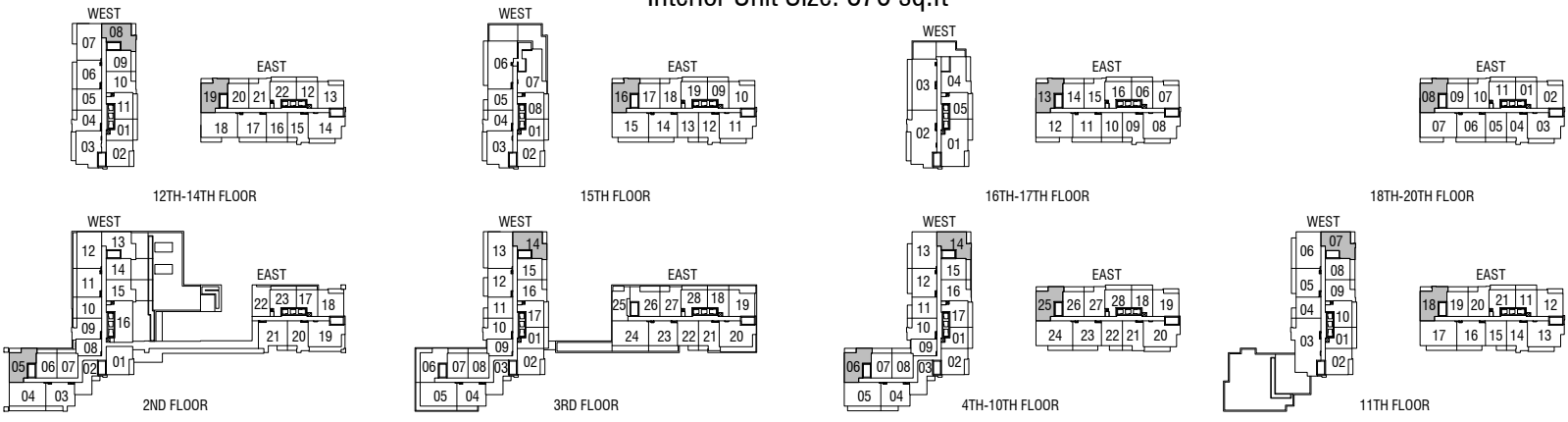
SCHEDULE "D"



Unit W414, E508 & E1908 do not have floor to ceiling windows in the Master Bedroom. The Master Bedroom in these suites will have a knee wall.

2B-C(1)

Interior Unit Size: 876 sq.ft



SUITE W205, W(3-10)14, W(4-10)06, E(4-20)08, W1107, W(12-14)08



Purchaser Acknowledgement Date February 11, (Municipal) No. 1108E Level 11 Legal Unit No. 18

Whenever there are any discrepancies between the dimensions, areas and layout as set out in this Schedule D, and any marketing materials or brochures, the dimensions, areas and layout in the Schedule D shall govern. Dimensions, specifications, layouts, location of materials and fixtures, tile floor patterns and architectural detailing (including window size and location and door size, location and swing) are approximate only and are subject to change or modifications, without notice. Where there is a metal element indicated, metal element's dimension, size and location are approximate only and subject to change without notice. Actual usable floor space varies from stated floor area. Orientation of suite may be reversed and Purchaser agrees to accept same. Balconies, decks and terraces are exclusive use common elements shown for display purposes only and location and size are subject to change without notice. All illustrations are artist concepts only. The provisions of Schedule "X" of the Agreement, including Section 6 and 38, apply to the Schedule. E. & O.E.